

Pressure Reducing

3010 MP

Pilot Operated Reducing Valve

SF International reserves the right to change the designs and/or materials of its products without notice, ©2013 SF International



3010-MP is a pilot operated valve suitable for steam or compressed air, it is used to reduce steam pressure in piping mains and process applications. Pilot-operated regulators are quick acting and will maintain constant downstream pressure when steam usage varies. It can be supplied with screwed connections BSPT (BS 21) or NPT (ANSI-B1.20.1). Flanges according to ANSI-B16.1 and ANSI-B16.5 class. Contact factory for other connection options.



FEATURES

Model	3010-MP		
Sizes	1/2" - 2"	2 1/2" - 4"	
Connections	Screwed	Flanged	
Application	Steam, Water, Gases		
Body Material	GGG 40.3 Ductile Iron 216 WCB Carbon Steel		
Option	Reduced Port Trim		
PMO Max. Oper. Pressure	Ductile Iron	250 psig	
TMO Max. Oper. Temperature	Ductile Iron	450°F	
PMO Max. Oper. Pressure	Carbon Steel	293 psig	
TMO Max. Oper. Temperature	Carbon Steel	600°F	

DOWNSTREAM PRESSURE RANGES

Type A (Yellow): 3 to 28 psig

Type B (Blue): 14 to 100 psig

Type C (Gray): 77 to 200 psig

HOW TO ORDER

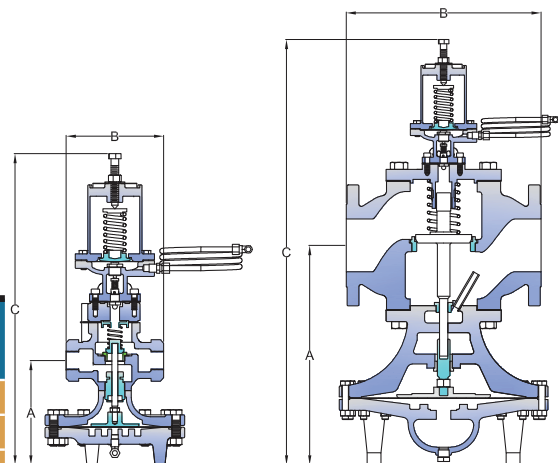
Specify:

- Model
- Sizes and type of connection

Example: 1 3010 Series Valve with 1 1/2" body and BSPT connections fitted with Type B MP-10 Pilot.

DIMENSIONS & WEIGHT (INCHES & POUNDS)

DN	A	B Screw	ANSI B16.1		ANSI B16.5		C	Weight
			125#	250#	150#	300#		
1/2"	6.30	5.51	-	-	-	-	19.49	33.73
3/4"	6.30	5.51	-	-	-	-	19.49	33.73
1"	7.28	5.94	-	-	-	-	19.69	41.89
1 1/4"	7.28	7.28	-	-	-	-	20.47	46.30
1 1/2"	7.28	7.28	-	-	-	-	20.47	46.30
2"	8.07	8.50	-	-	-	-	22.83	70.55
2 1/2"	14.25	-	10.79	11.10	10.79	11.10	28.74	157.63
3"	14.65	-	11.22	11.22	11.22	11.22	28.74	189.60
4"	16.34	-	14.53	14.53	14.57	14.57	31.89	260.15





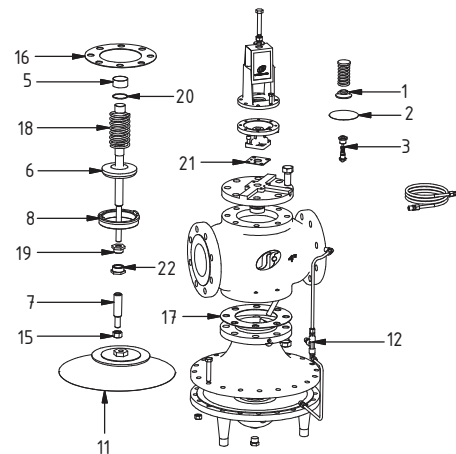
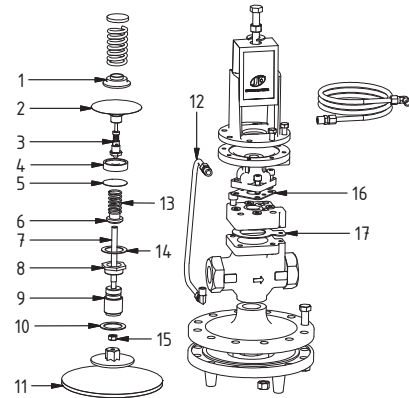
Pressure Reducing

3010 MP

Pilot Operated Reducing Valve

REPAIRS AND MATERIALS

Pos.	Description	Material
1	Pilot Adjustment Spring Guide	AISI 420 SS
2	Pilot Diaphragm	AISI 301 SS
3	Pilot Seat	AISI 420 SS
4	Main Valve Spring Guide	AISI 420 SS
5	Screen	AISI 420 SS
6	Seat Head	AISI 420 SS
7	Stem	AISI 304 SS
8	Seat	AISI 420 SS
9	Coupling	AISI 420 SS
10	Coupling Gasket	Non Asbestos
11	Diaphragm	AISI 301 SS
12	Sensing Pipe	AISI 420 SS
13	Main Valve Spring	Spring Steel
14	Seat Gasket	Non Asbestos
15	Stem Lock-nut	AISI 304 SS
16	Cover Gasket	Non Asbestos
17	Body Gasket	Non Asbestos
18	Pilot Adjustment Spring	AISI 420 SS
19	Stem Guide	AISI 304 SS
20	Screen Ring	AISI 420 SS
21	Pilot Gasket	Non Asbestos
22	Lower Stem Guide	AISI 420 SS



HOW TO ORDER SPARE PARTS (CODE)

Model	Description	Pos.	1/2"	3/4"	1"	1 1/4"	1 1/2"	2"	2 1/2"	3"	4"
3010 MP	Pilot Diaphragm Assy	2	14,282	14,282	14,282	14,282	14,282	14,282	14,282	14,282	14,282
	Pilot MP-10 Seat Assy	3	6,358	6,358	6,358	6,358	6,358	6,358	6,358	6,358	6,358
	Pilot Gasket	16	10,927	10,927	10,927	10,927	10,927	10,927	10,927	10,927	10,927
	Stem	7	6,428	6,428	6,430	6,432	6,432	6,433	12,563	11,970	11,122
	Diaphragm Assy	11	15,181	15,181	14,315	14,315	14,315	15,182	8,773	8,773	15,180
	Gasket	14	6,434	6,434	6,436	6,438	6,438	6,439	11,031	12,574	11,038
	Spring Assy	7	6,454	6,454	6,454	6,456	6,456	6,457	11,345	11,345	11,115
	Sensing Pipe Assy	12	6,458	6,458	6,460	6,462	6,462	6,463	11,366	12,611	9,698
Seat Assy	8	6,422	6,423	6,424	6,425	6,426	6,427	12,432	11,874	11,123	

REGULATING

INSTALLATION INSTRUCTIONS

This valve should be installed in a horizontal pipeline with the direction of flow as indicated by the arrow on the valve body.

SAFETY, INSTALLATION AND MAINTENANCE

For safety, installation and maintenance information see instructions supplied with the product (MI-0810-15).